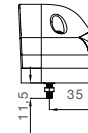
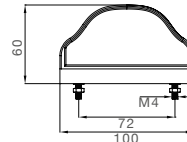
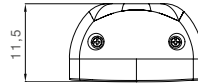




REGPOINT LED



IP 54



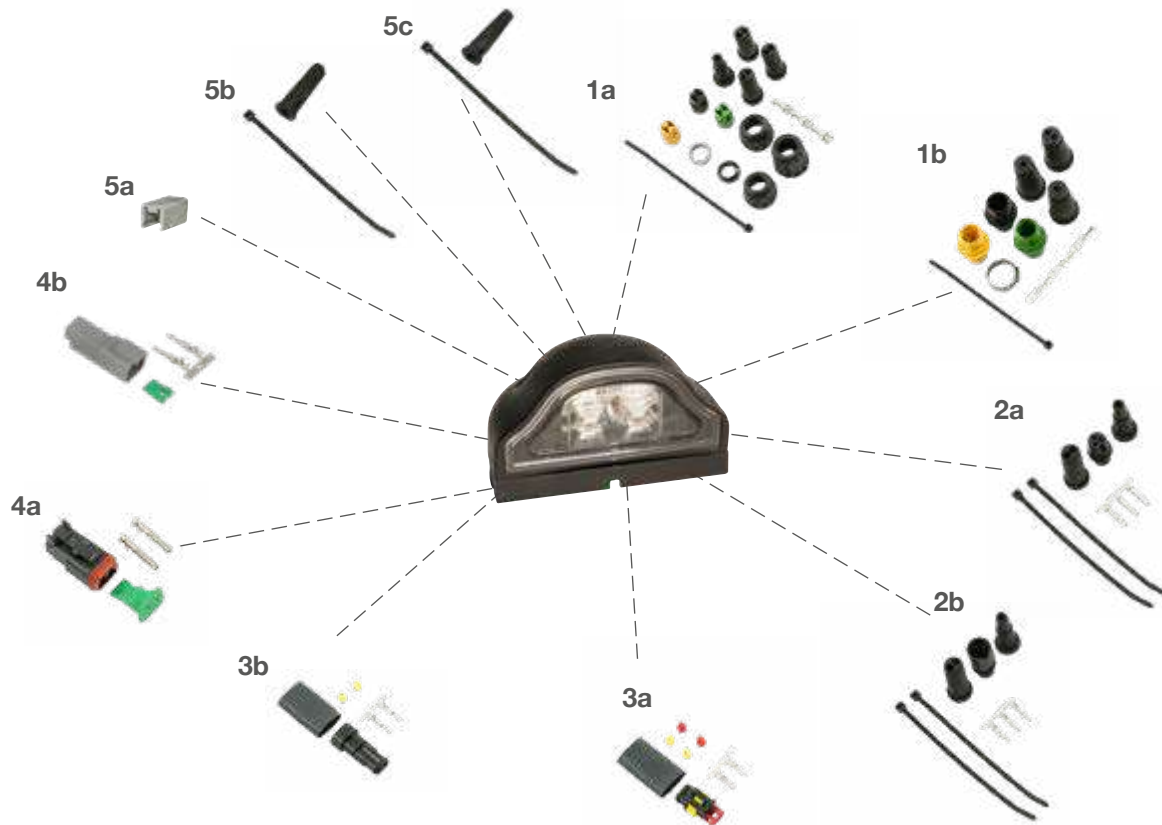
Kennzeichenlicht
Number plate light

BEST. NR				ZUSATZ	ANSCHLUSS
PART NO				ADD ON	CONNECTOR
36-3607-004	1/-	LED	24V		2 pol. ASS2 2 pin ASS2 ♀ 0,50 m
36-3607-034	1/-	LED	24V		2 pol. ASS2 2 pin ASS2 ♀ 0,80 m
36-3607-014	1/-	LED	24V		2 pol. ASS2 2 pin ASS2 ♀ 1,00 m
36-3607-024	1/-	LED	24V		2 pol. ASS2 2 pin ASS2 ♀ 3,50 m
36-3607-074	1/-	LED	24V		3 pol. ASS3 3 pin ASS3 ♀ 0,50 m
36-3607-094	1/-	LED	24V		3 pol. ASS3 3 pin ASS3 ♀ 1,00 m
36-3690-004	1/-	LED	24V		2 pol. AFK plus lear 2 pin AFK plus lear 0,50 m
36-3690-034	1/-	LED	24V		2 pol. Deutsch 2 pin Deutsch ♂ 0,17 m
36-3600-044	1/-	LED	24V		2 pol. Superseal 2 pin Superseal ♀ 0,25 m
36-3690-014	1/-	LED	24V		2 pol. Superseal 2 pin Superseal ♂ 3,50 m
36-3690-024	1/-	LED	24V		2 pol. Superseal 2 pin Superseal ♀ 1,20 m
36-3690-044	1/-	LED	24V		2 pol. Superseal 2 pin Superseal ♂ 0,15 m
36-3600-004	1/-	LED	24V		offenes Ende open end 0,50 m
36-3600-014	1/-	LED	24V		offenes Ende open end 1,00 m
36-3600-024	1/-	LED	24V		offenes Ende open end 3,50 m
36-3604-004	1/-	LED	24V		P&R 0,50 m
36-3604-014	1/-	LED	24V		P&R 1,00 m
36-3604-024	1/-	LED	24V		P&R 3,50 m



REGPOINT LED

ZUBEHÖR / ACCESSORIES



- 1 ASS1 & ASS2 Verbinder | ASS1 & ASS2 connector**
 - (a) 2 pol. weiblich
2 pin female 13-5626-401
 - (b) 2 pol. männlich
2 pin male 13-5625-991
- 2 ASS3 Verbinder | ASS3 connector**
 - (a) 3 pol. weiblich
3 pin female 13-0322-281
 - (b) 3 pol. männlich
3 pin male 13-0332-281
- 3 Superseal Verbinder | Superseal connector**
 - (a) 2 pol. weiblich
2 pin female 15-7002-044
 - (b) 2 pol. männlich
2 pin male 15-7002-054

- 4 Deutsch Verbinder | Deutsch connector**
 - (a) 2 pol. weiblich
2 pin female 15-7002-135
 - (b) 2 pol. männlich
2 pin male 15-7002-125
- 5 für P&R Verbinder | for P&R connector**
 - (a) Verschlusskappen
caps 15-5971-014
 - (b) Endkappen rund
end caps round 15-5983-024
 - (c) Endkappen eckig
end caps square 15-5729-014

